

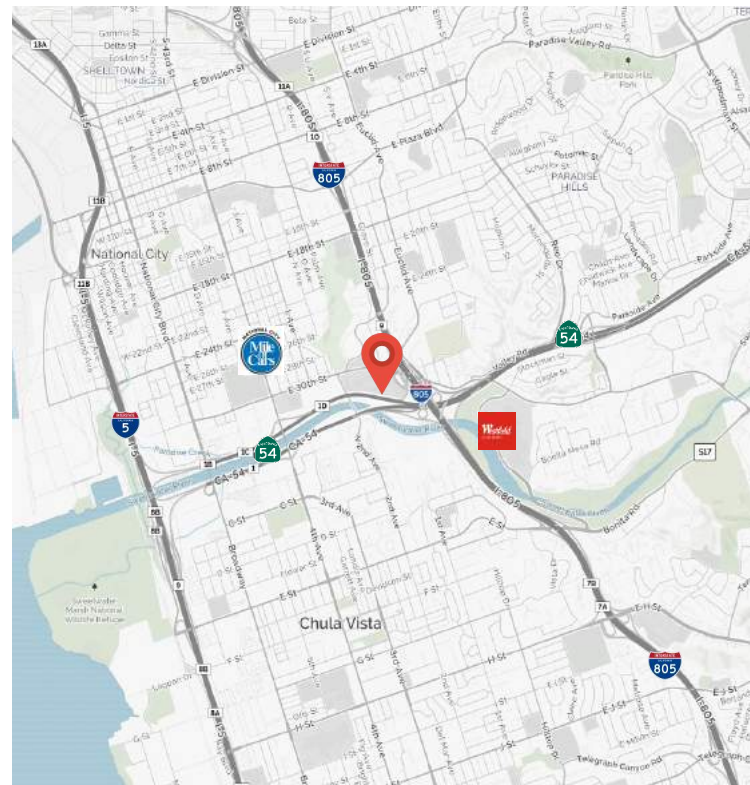
# SECOND FLOOR OFFICE FOR LEASE

1727 Sweetwater Road, National City, CA 91950



## Property & Location Features:

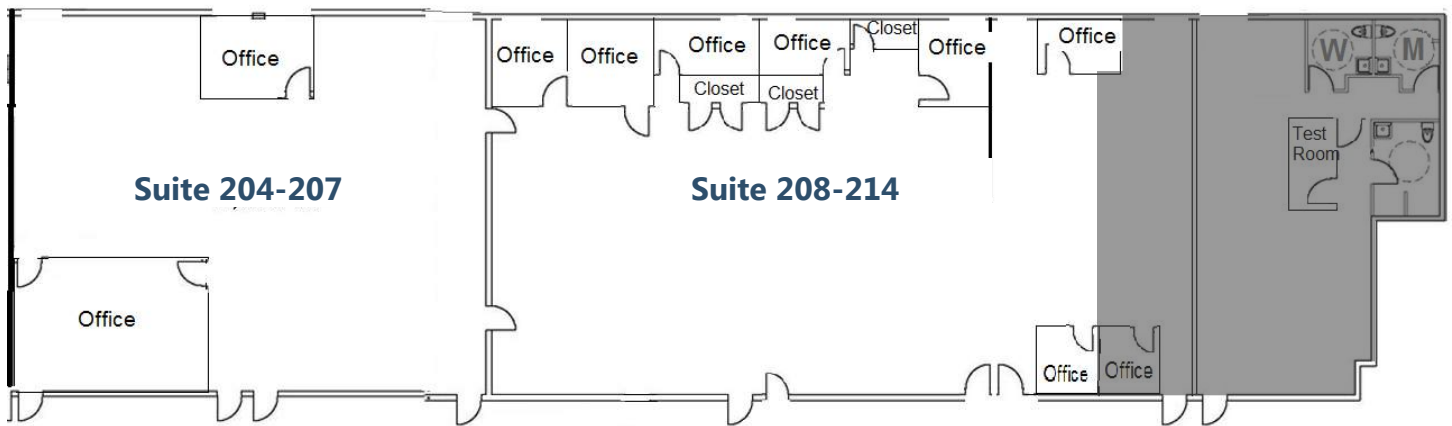
- Second Floor Office Overlooking Sweetwater Plaza East, a Bustling 54,825 SF Commercial Center
- **Elevator Served**
- 24 Hour On-Site Security
- Easy Access to I-805 and Hwy 54 via Sweetwater Road (26,300 Cars Per Day)
- Proximate to Various Destinations Including:
  - [Westfield Plaza Bonita](#) - 1 Mile
  - [Chula Vista Bayfront Master Plan](#) - 4.3 Miles
  - [Downtown San Diego](#) - 8 Miles
  - International Port of Entry - San Ysidro - 9.5 Miles  
*One of the World's Busiest Border Crossings*
- Excellent Visibility and Monument Signage Potential
- Parking Ratio: 3/1,000 SF - Secured Employee Parking



BRE # 01971891

# SECOND FLOOR OFFICE FOR LEASE

1727 Sweetwater Road, National City, CA 91950



Floor plan is not to scale; for reference purposes only

<b>Suite 204-207</b>	2,813 SF
<b>Suite 208-214</b>	5,060 SF
<b>Suite 204-214</b>	7,863 Total Contiguous SF

## Highest & Best:

Accountant/Tax Services, Attorney's Office, Contractor's Office, Real Estate Office, Trade & Vocational Schools and Many More



BRE # 01971891

# SECOND FLOOR OFFICE FOR LEASE

1727 Sweetwater Road, National City, CA 91950

Building 1717	Suite	SF
Neighborhood National Bank	101	7,498
Building 1727 - 1st Floor		
Kyoto Market	101	1,285
AVAILABLE	102-103	1,400
Farmer's Insurance	104	675
Navy Federal Credit Union	105-107	5,524
AVAILABLE	109	2,480
Dentist	110	1,089
AVAILABLE	111	620
Bay Cities Chiropractic	112-113	1,688
O'Leisure Nail Salon	114	1,414
Allstate Insurance	115	694
Respados Michoacan	116	694
Physical Therapy	117	1,920
Building 1727 - 2nd Floor		
IAS Builders	201-203	1,791
<b>*AVAILABLE</b>	<b>204-207</b>	<b>2,813</b>
<b>*AVAILABLE</b>	<b>208-214</b>	<b>5,060</b>
Building 1747		
Salon Centric	101-103	3,123
MD Weightloss	104	800
Speranza Dance Co.	105	1,014
Dunn-Edwards	106-107	6,350
Wells Fargo ATM	kiosk	272
AVAILABLE	kiosk	272



Site plan is not to scale; for reference purposes only



**Kyle Clark**

Senior Director

Direct 619.577.4558

kclark@theheritagegroup.com

BRE # 00867784

**Dan McCarthy**

Senior Director

Direct 619.577.4557

dmccarthy@theheritagegroup.com

BRE # 00928868

**Lev Mizan**

Associate

Direct 619.888.5343

lmizan@theheritagegroup.com

BRE # 01998777

BRE # 01971891